

Antibodies specifically developed for use on formalin-fixed paraffin-embedded tissues

The HistoSure antibody range launched in 2017. It is comprised of antibodies that have been specifically developed for use on formalin-fixed paraffin-embedded tissues. As with all SYSY products, HistoSure antibodies are exclusively available under the Synaptic Systems brand. They are produced and thoroughly tested in our own facilities to guarantee the best quality and reliability. HistoSure antibodies are subject to our special HistoSure Quality Guidelines.

“ In all we do, we are dedicated to supporting cutting-edge science with the most trustworthy antibody products. Therefore, we develop and produce all antibodies in-house and we thoroughly test our products in cooperation with leading partners in the scientific field.”

Superior validation

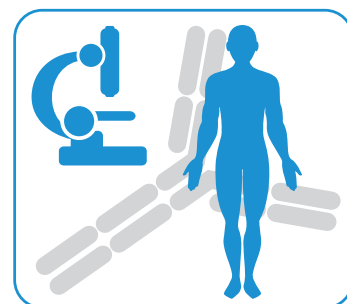
Validation of HistoSure antibodies is performed on a comprehensive panel of tissue types displaying varied target expression levels to guarantee antibody specificity and sensitivity. In-house testing on either mouse and rat tissues or human clinical samples is further supported by antibody validation carried out by scientific collaborators or external clinical pathologists. Antibody testing in other applications (Western Blot, IHC, ICC) is also an indispensable part of the validation process. This dedication to producing high quality reagents ensures all HistoSure antibodies display minimal staining artifacts and a high signal-to-noise ratio.

Product and application specific protocols

Unlike many other antibody manufacturers who provide general protocols for their products, HistoSure provide both product-specific protocols and application-specific protocols. A reference protocol is provided for every HistoSure product application tested in-house. Additionally, the scientists who develop and validate the products are also responsible for technical support. This guarantees the best possible assistance with technical and methodological questions.



Antibodies for mouse histopathology

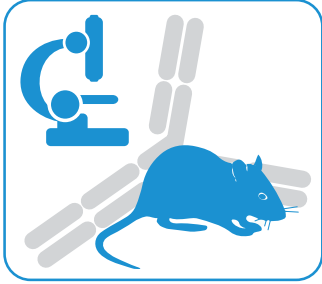


Antibodies for human histopathology



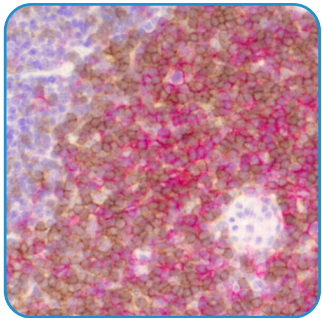
Antibodies for human - mouse chimera (PDX)

Antibodies specifically developed for use on formalin-fixed paraffin-embedded tissues



Antibodies for Mouse Pathology

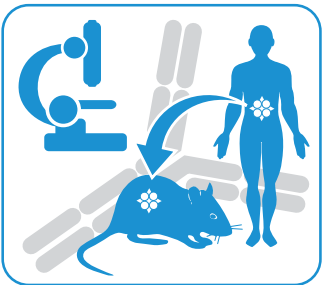
Rather than developing antibodies against multiple species, and running the risk of poor antibody performance across all species, the majority of our antibodies are designed to target only mouse samples which enables optimal performance in mouse histopathology.



Immunohistochemical double-staining of formalin-fixed paraffin embedded murine spleen section using rabbit anti-CD8a (cat. no. HS-361 003; AP-RED, red color) and rat anti-CD4 (cat. no. HS-360 117; DAB, brown color). CD4 does not stain CD8a + cytotoxic T-cells. Nuclei were counterstained with hematoxylin (blue).

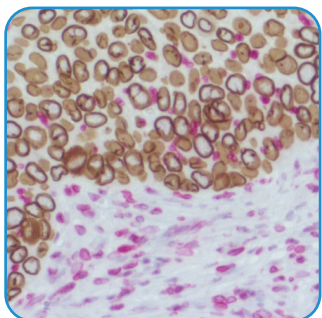
Product highlights

- Anti-CD4 HS-360 117 (rat monoclonal)
- Anti-CD8a HS-361 003 (rabbit polyclonal)
- Anti-IBA1 HS-234 008 (rabbit recombinant)
- Anti-CD11c HS-375 003 (rabbit polyclonal)



Antibodies for human - mouse chimera (PDX)

Our range of species-specific antibodies, developed to identify mouse or human samples with no cross-reactivity between species, are the perfect tool for cancer research in humanized mouse models (PDX research) where the ability to effectively discriminate between species is vital.



Immunohistochemical double-staining of formalin-fixed paraffin embedded cell-line derived NSCLC lung xenograft models using rat anti-human Lamin B1 (cat. no. HS-404 017; DAB, brown color) and rabbit anti-mouse Lamin B1 (cat. no. HS-404 003; AP-RED, red color). Nuclei were counter-stained with haematoxylin (blue).

Product highlights

- Anti-Lamin B1 HS-404 017 (human-specific)
- Anti-Lamin B1 HS-404 003 (mouse-specific)
- Anti-Ki67 HS-398 117 (mouse specific)
- Anti-CD68 HS-460 017 (human-specific)